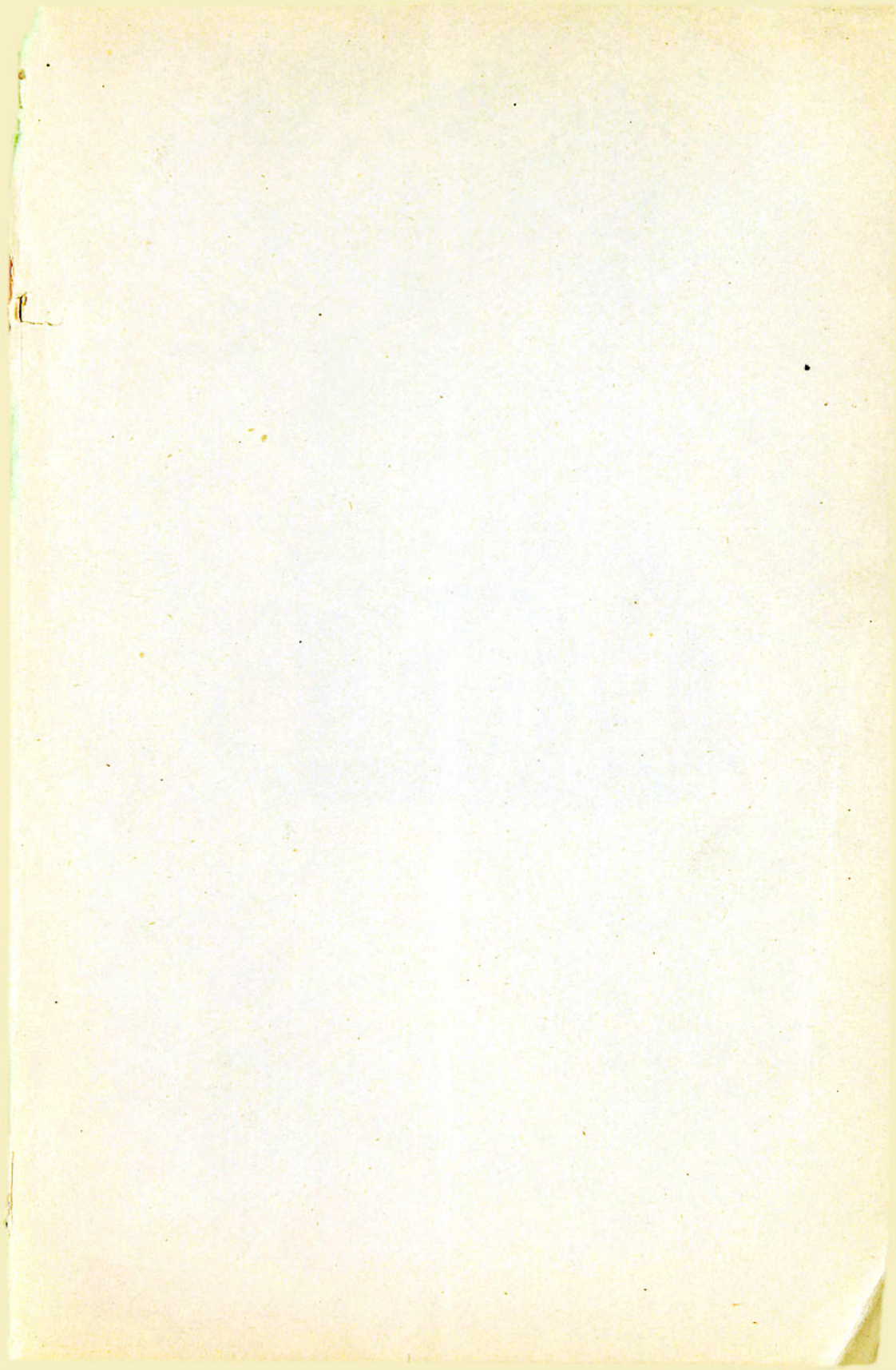


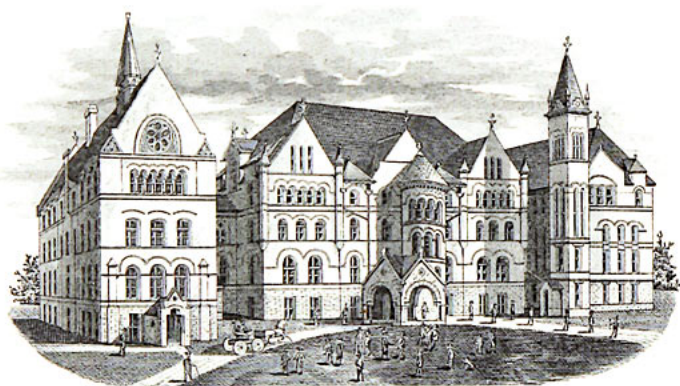
MACALESTER COLLEGE,

MINNESOTA.

1888-1889.







St. Paul's & St. George's, 1854

FOURTH : ANNUAL

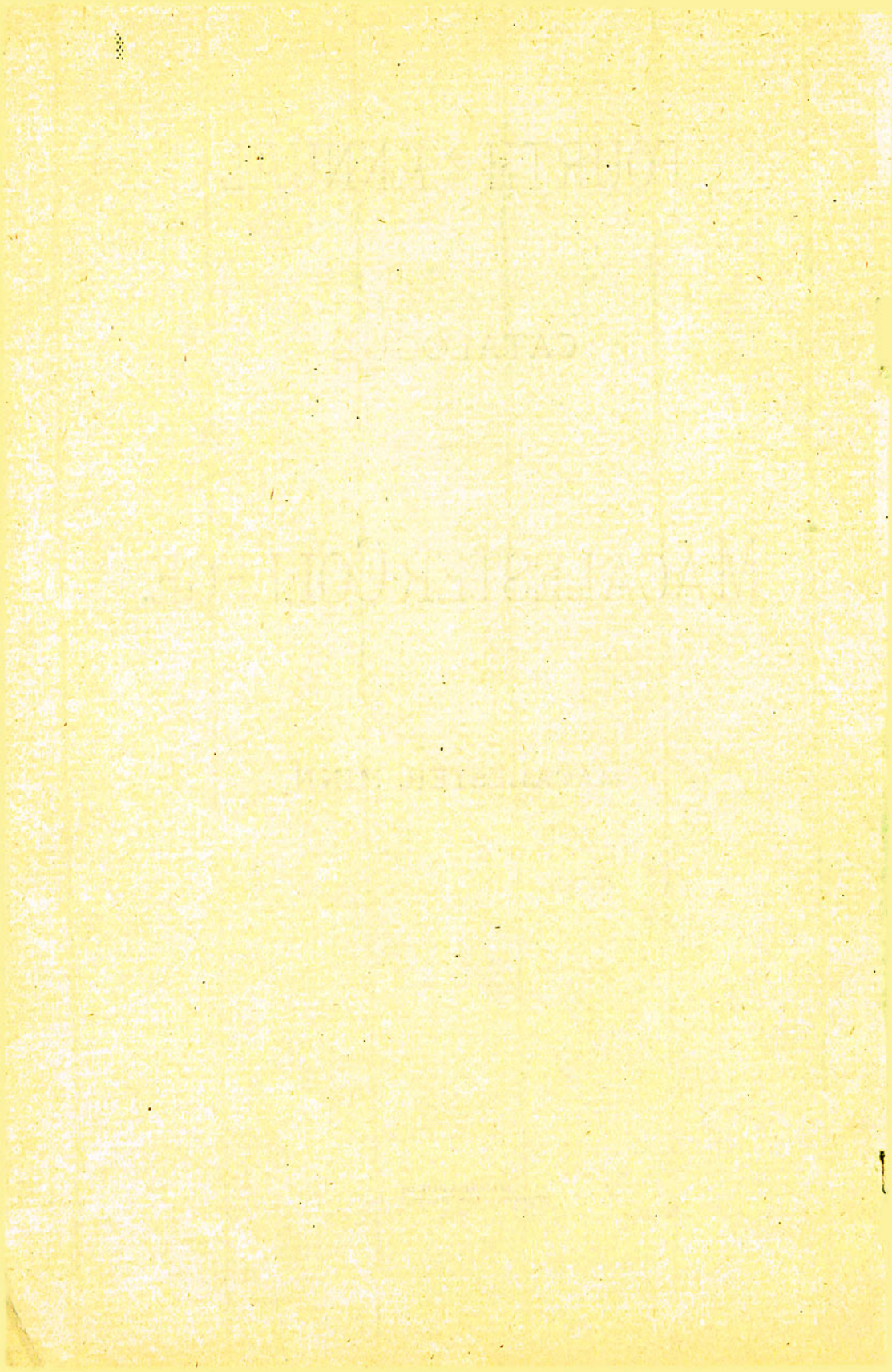
CATALOGUE

-OF-

MACALESTER COLLEGE,

MACALESTER, MINN.

MINNEAPOLIS:
TRIBUNE JOB PRINTING CO.
1889.



Christus in Omnibus, Lex et Lux.

Macalester College opened Wednesday, Sept. 16, 1885, under Presbyterian control.

It aims to secure thorough education in the Classics, in the Sciences, in Modern Languages, and in Literature, through experienced teachers, and under positive religious influences.

Denominational, but not Sectarian.

EXERCISES OF FIRST ANNUAL COMMENCEMENT.

JUNE 9th TO 12th, 1889.

- June 9, Sabbath, 3 P. M. Baccalaureate Sermon by the President.
- June 9, Sabbath, 8 P. M. Sermon to the College Y. M. C. A. by Rev. Willis G. Craig, D. D., of McCormick Theological Seminary, Chicago, Ill.
- June 10, Monday, 10 A. M. Field Day.
- June 10, Monday, 8 P. M. Senior Address by Hon. Eugene M. Wilson, Minneapolis, Minn.
- June 11, Tuesday, 2:30 P. M. Class Day.
- June 11, Tuesday, 8 P. M. Hyperion Literary Entertainment.
- June 12, Wednesday, 9:30 A. M. First Annual Commencement.

 TRUSTEES OF THE COLLEGE.

REV. THOMAS A. McCURDY, D. D., *ex officio*, - Macalester, Minn.

CLASS OF 1889.

EUGENE M. WILSON, ESQ., - - - Minneapolis, Minn.

REV. JOSEPH C. WHITNEY, - - - Minneapolis, Minn.

H. KNOX TAYLOR, ESQ., - - - St. Paul, Minn.

THOMAS COCHRAN, JR., ESQ., - - - St. Paul, Minn.

CLASS OF 1890.

HENRY J. HORN, ESQ., - - - St. Paul, Minn.

PROF. B. F. WRIGHT, - - - St. Paul, Minn.

WILLIAM S. BEST, ESQ., - - - Minneapolis, Minn.

REV. DANIEL RICE, D. D.,* - - - Macalester, Minn.

WILLIAM M. TENNEY, ESQ., - - - Minneapolis, Minn.

CLASS OF 1891.

REV. DAVID J. BURRELL, D. D., - - - Minneapolis, Minn.

HON. ALEXANDER RAMSEY, - - - St. Paul, Minn.

ROBERT P. LEWIS, ESQ., - - - St. Paul, Minn.

HENRY L. MOSS, ESQ., - - - St. Paul, Minn.

CHAS. T. THOMPSON, ESQ., - - - Minneapolis, Minn.

* Deceased.

OFFICERS.

J. C. WHITNEY, - - - PRESIDENT BOARD OF TRUSTEES.
 R. P. LEWIS, - - - VICE-PRESIDENT BOARD OF TRUSTEES.
 W. M. TENNEY, - - - SECRETARY BOARD OF TRUSTEES.

Finance Committee.

THOMAS COCHRAN,
 R. P. LEWIS,
 C. T. THOMPSON.

Auditing Committee.

DANIEL RICE,
 H. K. TAYLOR.

Committee on Dormitory, Buildings and Grounds.

R. P. LEWIS,
 B. F. WRIGHT,
 J. C. WHITNEY.

Committee on Instruction.

B. F. WRIGHT,
 J. C. WHITNEY,
 D. J. BURRELL.

Committee on Ways and Means.

ALEXANDER RAMSEY,
 THOMAS COCHRAN,
 E. M. WILSON,
 C. T. THOMPSON,
 R. P. LEWIS,
 H. K. TAYLOR,
 T. A. McCURDY.

Committee on Library.

H. L. MOSS,
 H. J. HORN,
 W. S. BEST.

Fiscal Secretary and Treasurer.

REV. GEORGE F. MCAFEE, MACALESTER, MINN.

FACULTY.

REV. THOMAS A. McCURDY, D. D., PRESIDENT,*
And Professor of Apologetics and Ethics.

REV. EDWARD D. NEILL, D. D.,†
Professor of History, English Literature and Political Economy.

REV. WILLIAM R. KIRKWOOD, D. D.,‡
Professor of Mental Science and Logic.

CHARLES FORBES, B. S., M. D.,
Professor of Natural Science.

FRANCIS B. PEARSON, A. M.,
Professor of Latin and English.

JAMES WALLACE, PH. D.,
Professor of Greek and Anglo-Saxon.

REV. DANIEL RICE, D. D.,§
Professor of Biblical History and Literature.

JAMES H. BOYD, A. M.,
Professor of Mathematics and Astronomy.

CHARLES A. WINTER,
Instructor in Modern Languages.

* Endowed by the Synod of Minnesota, in the sum of \$30,000.

† Endowed by Matthew W. Baldwin, Esq., of Philadelphia, in the sum of \$25,000.

‡ Endowed by Andrew and Sarah E. Oliver, of Minneapolis, Minn., in the sum of \$25,000.

§ Deceased.

OFFICERS AND COMMITTEES OF FACULTY.

EDWARD D. NEILL,	-	-	-	-	LIBRARIAN.
FRANCIS B. PEARSON,	-	-	-	-	SECRETARY.
CHARLES FORBES,	-	-	-	-	REGISTRAR.

On Dormitory and Sanitation.

CHARLES FORBES,
THE PRESIDENT,
JAMES H. BOYD.

On Rules and Regulations.

W. R. KIRKWOOD,
THE PRESIDENT,
JAMES WALLACE.

On Athletics.

JAMES H. BOYD,
CHARLES FORBES.

On Reading Room.

JAMES WALLACE,
F. B. PEARSON.

On Lecture Course.

F. B. PEARSON,
EDWARD D. NEILL,
THE PRESIDENT.

On Catalogue.

THE PRESIDENT,
JAMES WALLACE,
F. B. PEARSON.

On Library.

EDWARD D. NEILL,
JAMES WALLACE.

On General Interests of College.

THE PRESIDENT,
EDWARD D. NEILL,
W. R. KIRKWOOD.

In Memoriam.

On the fifth day of April, A. D. 1889,

The Reverend Daniel Rice, D. D.,

Entered into rest.

His life was long, exceeding the three score and ten years named by the Psalmist as the limit of effective life. It belongs to the Presbytery to speak of his early years and his pastoral work. Our words must have reference to his work in connection with the College.

To this Institution the last five years of his life were devoted. With rare tact and indomitable zeal, he canvassed the churches of the Synod of Minnesota and raised the money wherewith to endow the President's chair; and his energies were given, according to his best judgment, to promote all the interests of the College.

Nearly two years before his death he was elected to the professorship of Biblical Instruction, and this post he held until his end came. In the discharge of the duties belonging thereto, he was diligent and earnest, bringing to the work the large acquisitions of a long life characterized by scholarly habits and a zeal and intellect unbroken by the flight of years.

His sermons in the College Chapel were clear and forcible presentations of "the truth as it is in Jesus Christ." His ideal of Christian life was high, and he sought earnestly and with great success to exemplify it in his own life. His character was one of singular modesty, gentleness and simplicity, combined in a rare degree with firmness, patience and high moral courage. He was emphatically a man of sound wisdom and understanding.

Finding his work done, he gave his last hours to an effort to increase the strength and efficiency of the College, bequeathing to it a large part of his library, and twenty-five thousand dollars for the endowment of the chair he had filled. This done, he quietly awaited the coming of his Lord who, at the dawning of the day, took him to a home in the land of everlasting light "where the inhabitant shall never say, 'I am sick.'"

Our hearty sympathies are given to the lonely partner of his long life who yet awaits the call of the Master to a blessed reunion in our Father's house on high.

Mourning our loss, rejoicing in his gain, we address ourselves to the work given us to do, so that when the Master comes he may find us ready.

COLLEGIATE DEPARTMENT.

STUDENTS.

a. c., Ancient Classical Course; m. c., Modern Classical; p., partial.

SENIOR CLASS.

George Washington Achard, a. c.,	-	-	Minneapolis, Minn.
Joseph Wilson Cochran, a. c.,	-	-	Minneapolis, Minn.
Ulysses Grant Evans, a. c.,	-	-	Cedar Rapids, Ia.
James Chase Hambleton, m. c.,	-	-	West Jefferson, O.
Benjamin Wallace Irvin, a. c.,	-	-	Shreve, O.
Samuel Markle Kirkwood, a. c.,	-	-	Macalester, Minn.
William Porter Lee, a. c.,	-	-	Pembroke, N. Y.
Paul Erskine McCurdy, a. c.,	-	-	Macalester, Minn.
Louis Ferdinand Slagle, m. c.,	-	-	Danville, Ill.
Charles Albert Winter, m. c.,	-	-	Portsmouth, O.

JUNIOR CLASS.

Myron Augustus Clark, a. c.,	-	-	Minneapolis, Minn.
Thaddeus Thackery Creswell, a. c.,	-	-	Minneapolis, Minn.
John Knox Hall, a. c.,	-	-	Cedar Rapids, Ia.
William Henry Humphrey, a. c.,	-	-	Hudson, Wis.
William Paul Kirkwood, a. c.,	-	-	Macalester, Minn.
William McCurdy Pitts, m. c.,	-	-	Indiana, Pa.
Amos Avery Randall, a. c.,	-	-	Cedar Rapids, Ia.
Albert DeForest Tyler, a. c.,	-	-	St. Paul, Minn.
Judson Leolin Underwood, a. c.,	-	-	Fergus Falls, Minn.
Arthur Brownell Wright, m. c.,	-	-	St. Paul, Minn.

SOPHOMORE CLASS.

Maitland Vance Bartlett, a. c.,	-	-	New Richmond, Wis.
Harry N. Brown, m. c.,	-	-	Albert Lea, Minn.
Frank W. Brown, a. c.,	-	-	West Jefferson, O.
Charles A. Donaldson, m. c.,	-	-	Minneapolis, Minn.
Walter Francis Finch, a. c.,	-	-	Eden Prairie, Minn.
John Frederick Schurch, a. c.,	-	-	Hastings, Minn.
Walfrid Sundberg, a. c.,	-	-	St. Paul, Minn.
William Bradford Turner, m. c.,	-	-	Minneapolis, Minn.
Thomas Cornelius Williamson, a. c.,	-	-	Greenwood, Dak.

FRESHMAN CLASS.

William Bailey Brewster, m. c.,	-	-	-	-	Macalester, Minn.
Edward N. Bullen, p.,	-	-	-	-	Ashton, Dak.
Louis Stelle Burbank, p.,	-	-	-	-	Fergus Falls, Minn.
Alton B. Cheadle, m. c.,	-	-	-	-	Jackson, Minn.
Edward Lacy Darling, m. c.	-	-	-	-	Hudson, Wis.
William Rowland Dysart, a. c.,	-	-	-	-	St. Paul, Minn.
Oliver Ellis, p.,	-	-	-	-	Minneapolis, Minn.
Frank Clark Haman, m. c.,	-	-	-	-	Hudson, Wis.
Charles Husted Irvin, p.,	-	-	-	-	Shreve, O.
William Allen McCurdy, a. c.,	-	-	-	-	Macalester, Minn.
Murdock McLeod, a. c.,	-	-	-	-	St. Paul, Minn.
Robert Albion Miller, m. c.,	-	-	-	-	Minneapolis, Minn.
Eugene Ramaley, p.,	-	-	-	-	St. Paul, Minn.
James Martin Walls, m. c.,	-	-	-	-	St. Paul, Minn.
Percy Wilson, a. c.,	-	-	-	-	Fort Missoula, Mont.

 PREPARATORY DEPARTMENT.

STUDENTS.

SENIOR.

Frank Walker Beidler, a. c.,	-	-	-	-	Minneapolis, Minn.
Frank Briggs, m. c.,	-	-	-	-	Macalester, Minn.
Clare Selden Colgrove, a. c.,	-	-	-	-	Minneapolis, Minn.
Alexander Robertson Cochran, p.,	-	-	-	-	St. Paul, Minn.
Robert Jones Dysart, a. c.,	-	-	-	-	St. Paul, Minn.
Alfred Howell Ford, m. c.,	-	-	-	-	St. Paul, Minn.
Gus LeRoy Heegaard, m. c.,	-	-	-	-	Mandan, Dak.
Frank Lincoln Hanson, p.,	-	-	-	-	Minneapolis, Minn.
Victor Albert Johnson, p.,	-	-	-	-	St. Paul, Minn.
Robert Plummer Lewis, a. c.,	-	-	-	-	Mount Vernon, Ill.
Daniel David McLeod, a. c.,	-	-	-	-	St. Paul, Minn.
Sanford Fleming McLeod, a. c.,	-	-	-	-	St. Paul Minn.
Fred Sabin Murdock, m. c.,	-	-	-	-	Murdock, Minn.
James Carlisle Simonton, a. c.,	-	-	-	-	St. Paul, Minn.
Frank Brooks Upham, m. c.,	-	-	-	-	Fort Custer, Mont.
Alfred Taylor Welch, a. c.,	-	-	-	-	Menoken, Dak.
Charles Selah Whiting, p.,	-	-	-	-	St. Paul, Minn.
Guy Wilson, a. c.,	-	-	-	-	Fort Missoula, Mont.

MIDDLE.

Augustus Armstrong, a. c.,	-	-	-	-	Albert Lea, Minn.
Ralph Baldwin, p.,	-	-	-	-	Merriam Park.
Thomas Fitz-Morris Clark, a. c.,	-	-	-	-	Eden Prairie, Minn.
William Allison Craven, m. c.,	-	-	-	-	Monoken, Dak.
Ralph Eastman, m. c.,	-	-	-	-	Merriam Park, Minn.
Walter Scott Lee, a. c.,	-	-	-	-	Pembroke, N. Y.
Charles Norman McCloud, m. c.,	-	-	-	-	Macalester, Minn.
Robert West McCloud, a. c.,	-	-	-	-	Macalester, Minn.
William David Moffitt, m. c.,	-	-	-	-	Hamline, Minn.
Weston Lilley Moulder, a. c.,	-	-	-	-	St. Paul, Minn.
Alexander D. Naylor, m. c.,	-	-	-	-	Merriam Park, Minn.
William Hugh Sinclair, a. c.,	-	-	-	-	Duluth, Minn.
George Leonard Stouch, m. c.,	-	-	-	-	Fort Snelling, Minn.
Anthony Stoltz, p.,	-	-	-	-	Macalester, Minn.
Judson Floy Stone, a. c.,	-	-	-	-	Minneapolis, Minn.
Lee W. Tindolph, a. c.,	-	-	-	-	Minneapolis, Minn.

JUNIOR.

David Evans Blake,	-	-	-	-	Minneapolis, Minn.
Clyde Redginal Brewster,	-	-	-	-	Irvington, Neb.
Hawley William Clafin,	-	-	-	-	Muskego, Wis.
Lorenzo Irving Cook,	-	-	-	-	Fort Snelling, Minn.
Harry Crandall,	-	-	-	-	Merriam Park, Minn.
Bert Albert Coykendall,	-	-	-	-	Merriam Park, Minn.
John William Christianson,	-	-	-	-	Minneapolis Minn.
Nathan Winthrop Dudley,	-	-	-	-	Boston, Mass.
William Rufus Edwards,	-	-	-	-	Merriam Park, Minn.
John William French,	-	-	-	-	Fort Custer, Mont.
John McHenry Godley,	-	-	-	-	Minneapolis, Minn.
Fred Naylor Jones,	-	-	-	-	Minneapolis, Minn.
Henry Leaty,	-	-	-	-	Duluth, Minn.
Hermann Carson Luerssen,	-	-	-	-	Fort Snelling, Minn.
Albert W. Milhelm,	-	-	-	-	St. Paul, Minn.
Charles Milton Murray,	-	-	-	-	Princeton, Minn.
John Chauncey McDougal,	-	-	-	-	Duluth, Minn.
Albert John McKay,	-	-	-	-	Ashland, Wis.
William Kieth Naylor,	-	-	-	-	Merriam Park, Minn.
Egbert Simmons Oakley,	-	-	-	-	Buffalo, Minn.
Charles Oscar Ross,	-	-	-	-	Macalester, Minn.
Edward Sanford,	-	-	-	-	Red Wing, Minn.
Nels Gilbertson Sundby,	-	-	-	-	Minneapolis, Minn.
William Richard Thompson,	-	-	-	-	Hallock, Minn.
Edward L. Truax,	-	-	-	-	Macalester, Minn.
Arthur Whitney Vance,	-	-	-	-	St. Paul, Minn.
Robert L. Wharton,	-	-	-	-	St. Paul, Minn.

The following young ladies living near or on the College grounds, were, by action of the Board of Trustees, admitted to the privileges of the College:

Florence A. Forbes,	-	-	-	-	Macalester, Minn.
Minnie C. Kitchen,	-	-	-	-	Macalester, Minn.
Agnes F. Taylor,	-	-	-	-	Macalester, Minn.
Virginia D. Rose,	-	-	-	-	Merriam Park.
Edith Robbins,	-	-	-	-	Merriam Park.

COLLEGIATE COURSE.

FRESHMAN CLASS—FIRST TERM.

ANCIENT CLASSICAL.	MODERN CLASSICAL.
Bible Study: O. T. Biography (1).*	Bible Study: O. T. Biography (1).
Math.: Geometry— <i>Wentworth</i> (5).	Math.: Geometry— <i>Wentworth</i> (5).
Latin: Cicero, De Senectute } (5).	Latin: Cicero, De Senectute } (5).
Prose Comp. }	Prose Comp. }
Greek: Lucian—Selections } (5).	Ger.: Hist. of Ger.— <i>Taylor</i> } (5).
Prose Comp. }	German Prose— <i>Boisen</i> }
English: Study of Words— <i>Trench</i> (4).	English: Study of Words— <i>Trench</i> (4).

*Figures in parentheses show the number of recitations per week. Each recitation 45 minutes.

FRESHMAN CLASS—SECOND TERM.

ANCIENT CLASSICAL.	MODERN CLASSICAL.
Bible Study: O. T. Biography (1).	Bible Study: O. T. Biography (1).
Math.: Algebra— <i>Wells</i> (5).	Math.: Algebra— <i>Wells</i> (5).
Latin: Cicero, De Amicitia } (5).	Latin: Cicero, De Amicitia } (5).
Prose Comp. }	Prose Comp. }
Greek: Herodotus—Selections } (5).	German: Ballads— <i>Wagner</i> } (5).
Prose Comp. }	Prose Comp.— <i>Boisen</i> }
Logic (3).	Logic (3).

FRESHMAN CLASS—THIRD TERM.

ANCIENT CLASSICAL.	MODERN CLASSICAL.
Bible Study: N. T. Biography (1).	Bible Study: N. T. Biography (1).
Math.: Trigonometry— <i>Newcomb</i> (4).	Math.: Trigonometry— <i>Newcomb</i> (4).
Latin: Ovid (5).	Latin: Ovid (5).
Greek: Homer— <i>Iliad</i> (4).	German: <i>Wallenstein</i> — <i>Schiller</i> (4).
Perspective Drawing (3).	Perspective Drawing (3).
Eng.: Day's Art of Discourse (3).	Eng.: Day's Art of Discourse (3).

SOPHOMORE CLASS—FIRST TERM.

ANCIENT CLASSICAL.	MODERN CLASSICAL.
Bible Study: O. T. History (1). Math.: Trigonometry— <i>Newcomb</i> (4). Latin: Horace (3). Greek: Homer— <i>Iliad</i> (3). Natural Science: Physics— <i>Deschanel</i> (4). Eng.: Day's Art of Discourse (2). History: { Queen Elizabeth to the Execu- tion of Charles } (3). I. Themes by Students.	Bible Study: O. T. History (1). Math.: Trigonometry— <i>Newcomb</i> (4). Latin: Horace (3). German: Wilhelm Tell (3). Natural Science: Physics— <i>Deschanel</i> (4). Eng.: Day's Art Discourse (2). History: { Queen Elizabeth to the Execu- tion of Charles } (3). I. Themes by Students.

SOPHOMORE CLASS—SECOND TERM.

ANCIENT CLASSICAL.	MODERN CLASSICAL.
Bible Study: O. T. Hist (1). Math.: Analytical Geometry— <i>Newcomb</i> (4). Latin: Horace (3). Greek: Demosthenes— <i>Olynthiacs</i> (3). Natural Science: Physics— <i>Deschanel</i> (4). Eng.: Day's Art of Discourse (2). History: { Cromwellian Per- iod to Revolu- tion of 1688. } (3). Themes by Stu- dents.	Bible Study: O. T. Hist (1). Math.: Analytical Geometry— <i>Newcomb</i> (4). Latin: Horace (3). Ger.: Hermann and Dorothea— <i>Gæthe</i> (3). Natural Science: Physics— <i>Deschanel</i> (4). Eng.: Day's Art of Discourse (2). History: { Cromwellian Per- iod to Revolu- tion of 1688. } (3). Themes by Stu- dents.

SOPHOMORE CLASS—THIRD TERM.

ANCIENT CLASSICAL.	MODERN CLASSICAL.
Bible Study: O. T. Hist (1). Math.: Navigation and Surveying— <i>Schuyler</i> (3). Latin: Tacitus (3). Greek: Apology and Crito (3). Natural Science: Physics— <i>Deschanel</i> (4). Psychology— <i>Porter</i> (3). History: { Accession of Wil- liam and Mary to Stamp Act. } (3). Themes by Stu- dents.	Bible Study: O. T. Hist (1). Math.: Navigation and Surveying— <i>Schuyler</i> (3). Latin: Tacitus (3). Ger.: Iphigenia— <i>Gæthe</i> (3). Natural Science: Physics— <i>Deschanel</i> (4). Psychology: <i>Porter</i> (3.) History: { Accession of Wil- liam and Mary to Stamp Act. } (3). Themes by Stu- dents.

JUNIOR CLASS—FIRST TERM.

ANCIENT CLASSICAL.	MODERN CLASSICAL.
Ethics— <i>Gregory</i> (2). Natural Science: Chemistry (4). Human Intellect— <i>Porter</i> (4). Anglo-Saxon: Gram. and Read. (2). English Literature to 15th Century (1). History: Ecclesiastical Power during the Middle Ages (2). ELECTIVES— Math.: Conic Sections— <i>Bowser</i> (5). {Latin: Cicero, De Officiis (2). {Greek: Æschylus (3). Ger.: Grammar— <i>Schmitz</i> (5). French: Bocher's Otto's Grammar and Reader (5).	Ethics— <i>Gregory</i> (2). Natural Science: Chemistry (4). Human Intellect— <i>Porter</i> (4). Anglo-Saxon: Gram. and Read. (2). English Literature to 15th Century (1). History: Ecclesiastical Power during the Middle Ages (2). ELECTIVES— Math.: Conic Sections.— <i>Bowser</i> (5). {Latin: Cicero De Officiis (2). {Ger.: Nathan der Weise (3). Greek: Lessons and Grammar (5). French: Bocher's Otto's Grammar and Reader (5).

JUNIOR CLASS—SECOND TERM.

ANCIENT CLASSICAL.	MODERN CLASSICAL.
Ethics— <i>Gregory</i> (2). Natural Science: Chemistry (4). Logic— <i>Gregory</i> (4). Anglo-Saxon—Gram. and Read. (2). Elizabethan Literature (1). History: Constitutional History of England (2). ELECTIVES— Math.: Differential Calculus— <i>Bowser</i> (5). {Latin: Plautus (2). {Greek: Sophocles—Antigone (3). Ger. Grammar— <i>Schmitz</i> . First German Book— <i>Worman</i> . } (5). French: Bocher's Otto's Grammar and Reader (5).	Ethics— <i>Gregory</i> (2). Natural Science: Chemistry (4). Logic— <i>Gregory</i> (4). Anglo-Saxon: Gram. and Read. (2). Elizabethan Literature (2). History: Constitutional History of England (2). ELECTIVES— Math.: Differential Calculus— <i>Bowser</i> (5). {Latin: Plautus (2). {Ger.: Minna von Barnhelm— <i>Les-sing</i> (3). Greek: Lessons and Anabasis (5). French: Bocher's Otto's Grammar and Reader (5).

SENIOR CLASS—SECOND TERM.

ANCIENT CLASSICAL.	MODERN CLASSICAL.
<p>Christian Evidences (2). Natural Science: Zoology and Comparative Anatomy (2). Math. Astronomy—<i>Young</i> (3). Psychology: History of Philosophy—<i>Schwegler</i> (4). Political Economy (2). Colonial Charters: Constitution of United States (2). ELECTIVES— Math.: Mechanical Theory of Light and Heat (4). {Latin: Virgil—Georgics (2). {Greek: New Testament (2). German: Reader—<i>Whitney</i>. Conversation— } (4). <i>Worman</i>. French: LeCid (Corneille) or Litterateur Francaise Classique (2). Natural Science: Laboratory Work—Chemical Analysis (2).</p>	<p>Christian Evidences (2). Natural Science: Zoology and Comparative Anatomy (2). Math: Astronomy—<i>Young</i> (3). Psychology: History of Philosophy—<i>Schwegler</i> (4). Political Economy (2). Colonial Charters: Constitution of United States (2). ELECTIVES— Math.: Mechanical Theory of Light and Heat (4). {Latin: Virgil—Georgics (2). {German: Deutsche Literatur-geschichte (2). Greek: Anabasis and New Testament (4). French: LeCid (Corneille) or Litterateur Francaise Classique (2). Natural Science: Laboratory Work—Chemical Analysis (2).</p>

SENIOR CLASS—THIRD TERM.

ANCIENT CLASSICAL.	MODERN CLASSICAL.
<p>Astronomy—<i>Young</i> (4). Greek: N. T. (1). Social Science: Sociology (2). Natural Science: Geology—<i>Dana</i> (5). Biology: (3). International Law (2). Political and Constitutional History of United States 1789-1861 (1). Physiological Psychology (2).</p>	<p>Astronomy—<i>Young</i> (4). Greek: N. T. (1). Social Science: Sociology (2). Natural Science: Geology—<i>Dana</i> (5). Biology (3). International Law (2). Political and Constitutional History of United States 1789-1861 (1). Physiological Psychology (2).</p>

PREPARATORY COURSE.

JUNIOR CLASS.

FIRST TERM.

Biblical Instruction (1).*	Physical Geography— <i>Cornell</i> (3).
Arithmetic— <i>Fish</i> (4).	United States History— <i>Scudder</i> (3).
English Grammar— <i>Harvey</i> (4).	Latin: First Lessons— <i>Collar & Daniell</i> (5).

SECOND TERM.

Biblical Instruction (1).	Physical Geography— <i>Cornell</i> (3).
Arithmetic— <i>Fish</i> (4).	United States History— <i>Scudder</i> (3).
English Grammar— <i>Harvey</i> (4).	Latin: First Lessons— <i>Collar & Daniell</i> (5).

THIRD TERM.

Biblical Instruction (1).	English: Higher Lessons— <i>Reed & Kellogg</i> (5).
Arithmetic— <i>Fish</i> (4).	Drawing—Elementary Free-hand (5).
Latin Grammar— <i>Harkness</i> .	
First Lessons— <i>Collar & Daniell</i> .	

*Figures in parentheses show the number of recitations per week. Each recitation forty-five minutes.

Those entering the Junior Class of this department are supposed to be well prepared in studies of a lower grade. (See requirements for admission). After completing the work of this class, students are advanced to the Ancient Classical Course or to the Modern Classical Course, the classics in the former being Latin and Greek, and in the latter, Latin and German; in all other respects the studies are the same in both courses. By this arrangement students may choose either Greek or German, both of which are now introduced, and are carried forward throughout the curriculum.

MIDDLE CLASS—FIRST TERM.

ANCIENT CLASSICAL.	MODERN CLASSICAL.
Bible Study (1). Algebra— <i>Wells</i> (5). Latin: Grammar— <i>Harkness</i> } (5). <i>Nepos</i> . Greek—Inductive Method (5). English: Higher Lessons— <i>Reed & Kellogg</i> (4).	Bible Study (1). Algebra— <i>Wells</i> (5). Latin: Grammar— <i>Harkness</i> } (5). • <i>Nepos</i> . German: Grammar— <i>Schmitz</i> (5). English: Higher Lessons— <i>Reed & Kellogg</i> (4).

MIDDLE CLASS—SECOND TERM.

ANCIENT CLASSICAL.	MODERN CLASSICAL.
Bible Study (1). Algebra— <i>Wells</i> (5). Latin: Grammar— <i>Harkness</i> } (5). <i>Cæsar and Prose Comp.</i> Greek: Inductive Method (5). English: Word Analysis— <i>Swinton</i> (4).	Bible Study (1). Algebra— <i>Wells</i> (5). Latin: Grammar— <i>Harkness</i> } (5). <i>Cæsar and Prose Comp.</i> German: Grammar— <i>Schmitz</i> } (5). First Book— <i>Worman</i> English: Word Analysis— <i>Swinton</i> (4).

MIDDLE CLASS—THIRD TERM.

ANCIENT CLASSICAL.	MODERN CLASSICAL.
Bible Study (1). Algebra— <i>Wells</i> (5). Latin: Grammar— <i>Harkness</i> } (5). <i>Cæsar and Prose Comp.</i> Greek: Inductive Method (5). English— <i>Chittenden</i> (4).	Bible Study (1). Algebra— <i>Wells</i> (5). Latin: Grammar— <i>Harkness</i> } (5). <i>Cæsar and Prose Comp.</i> German: Grammar— <i>Schmitz</i> } (5). First Book— <i>Worman</i> English— <i>Chittenden</i> (4).

SENIOR CLASS—FIRST TERM.

ANCIENT CLASSICAL.	MODERN CLASSICAL.
Bible Study (1). Algebra— <i>Wells</i> (4). Latin: Grammar— <i>Harkness</i> } (5). Virgil: <i>Æneid</i> } Greek: Grammar— <i>Hadley</i> } (5). Anabasis and Prose Comp. } English— <i>Chittenden</i> (2). Elementary Civics (2). Physiology and Hygiene (1).	Bible Study (1). Algebra— <i>Wells</i> (4). Latin: Grammar— <i>Harkness</i> } (5). Virgil: <i>Æneid</i> } German: Reader and Gram- } mar— <i>Whitney</i> } (5). Second German Book— <i>Wor-</i> man } English— <i>Chittenden</i> (2). Elementary Civics (2). Physiology and Hygiene (1).

SENIOR CLASS—SECOND TERM.

ANCIENT CLASSICAL.	MODERN CLASSICAL.
Bible Study (1). Geometry— <i>Wentworth</i> (4). Latin: Grammar— <i>Harkness</i> } (5). Virgil: <i>Æneid</i> } Greek: Grammar— <i>Hadley</i> } (5). Anabasis and Prose Comp. } English: <i>Chittenden</i> (2). History: <i>Swinton's Outlines</i> (3).	Bible Study (1). Geometry— <i>Wentworth</i> (4). Latin: Grammar— <i>Harkness</i> } (5). Virgil: <i>Æneid</i> } German: Reader and Gram- } mar— <i>Whitney</i> } (5). Manual of German Compo- } sition— <i>Worman</i> } English— <i>Chittenden</i> (2). History: <i>Swinton's Outlines</i> . (3).

SENIOR CLASS—THIRD TERM.

ANCIENT CLASSICAL.	MODERN CLASSICAL.
Bible Study (1). Geometry— <i>Wentworth</i> (4). Latin: Grammar— <i>Harkness</i> } Cicero—Orations } Prose Composition } Greek: N. T. and Prose Comp. (5). English—Composition (1). History: <i>Swinton's Outlines</i> (4).	Bible Study (1). Geometry— <i>Wentworth</i> (4). Latin: Grammar— <i>Harkness</i> } (5). Cicero—Orations } Prose Composition } German: Reader and Gram } mar— <i>Whitney</i> } (5). Manual of German Compo- } sition— <i>Worman</i> } English—Composition (1). History: <i>Swinton's Outlines</i> (4).

COURSES OF STUDY.

The departments of study herewith presented are the Preparatory and the Collegiate. Thirty-six weeks, exclusive of vacations, constitute a year's study.

I. The Preparatory Department covers a period of three years, and is arranged to meet all requirements of thorough preparation for either of the Collegiate Courses. There are introduced at the beginning of the Middle Preparatory, two courses: the Ancient Classical and the Modern Classical; German in the Modern Classical is made the equivalent of Greek in the Ancient Classical. These courses run parallel throughout the curriculum, and furnish attractive and rare opportunities for proficiency in their prescribed studies.

Students are admitted to this department and assigned to such classes as their examinations determine; and all students in this department are under the special oversight of the Faculty, with the view of helping them to fixed habits of study, and of securing their greater proficiency in the branches studied. Those completing the studies of this department pass regularly and without examination into the Collegiate Department.

II. The Collegiate Department, like the Middle and Senior Preparatory, is divided into the Ancient Classical and Modern Classical. These courses are maintained until the close of the second term of the Senior year. No variation either from the Ancient Classical or Modern Classical, is permitted during the Freshman and Sophomore years. In the Junior, and first and second terms of the Senior year, the electives are as follows: Mathematics, Greek, Latin, German, French, and Laboratory work. Election of the desired course being made at the beginning of the Junior year, the student must pursue the studies of that course without change.

No class in Elective Studies will be formed with less than four members.

The following distinctive features of the prescribed course are worthy of note:

1. Students in the Ancient and Modern Classical courses have the same advantages in Mathematics, in the Sciences, in History, and in English.

2. The Bible and English (including Anglo-Saxon) are made prominent features throughout the course.

3. Natural Science is introduced in the Freshman year, and continues throughout the course.

4. Mental Science is introduced in the third term of the Sophomore year, in which a careful general view of the science is given, as needful preparation for the thorough mastery of the subject in succeeding terms.

5. The last term of the Senior year is devoted almost exclusively to Sciences, Literature and Philosophy.

III. Arrangements are being made to give instruction in the Scandinavian language to Scandinavian students who may desire such instruction in addition to either of the foregoing courses of study. These arrangements, including a competent Scandinavian instructor, are expected to be perfected before the opening of the college in September, 1889.

REQUIREMENTS FOR ADMISSION.

1. Testimonials of good moral character are required of all students at their entrance into either department of the College.

2. *Applicants for the Junior Preparatory* are required to pass an examination in Orthography, Descriptive Geography, Arithmetic through Common Fractions, and Elements of English Grammar.

3. *Applicants for the Freshman* are required to pass an examination as follows:

MATHEMATICS.—Arithmetic completed, Algebra to Quadratics, and Geometry (four books).

ENGLISH.—Grammatical Analysis, Word Analysis, and Elements of Rhetoric.

HISTORY.—United States' History, General History, (Swinton's, Anderson's, or their equivalents).

PHYSICAL GEOGRAPHY.—Cornell's, or its equivalent.

LATIN.—Three books of Cæsar, four Lives of Nepos, four books of Virgil, and three Orations of Cicero, or their equivalents.

4. In addition to the above, applicants for the Ancient Classical are required to pass an examination in Greek, as follows:

Lessons, three books of Anabasis, twenty lessons of Jones' Prose, or their equivalents.

Applicants for the Modern Classical are required to pass an examination in German, as follows:

German Grammar and Whitney's or Adler's Reader.

5. Applicants for more advanced classes are required to pass an examination in the studies, or their equivalents, of the lower classes.

6. Applicants deficient in some studies will be given opportunity to make up what will secure full class standing.

7. Due consideration will be given to the certificates of grades and diplomas brought by students from High Schools, Normal Schools and Academies.

PARTICULAR DESCRIPTION.

RELIGIOUS INSTRUCTION, APOLOGETICS AND ETHICS.

The President.

The Gospel Narrative and History constitutes the scope of Biblical Instruction in the Preparatory Course, from the beginning to the first term of the Senior year. An analysis of the Gospel History is now introduced and limited to the Senior Preparatory.

In the first term of the Junior Collegiate year Christian Ethics is begun and continued through the second term. The textual study of the subject is supplemented with lectures.

The first and second terms of the Senior year are devoted to Christian Evidences. By critical study of the text-book, by lectures on particular evidences and by historic review, the stability and growth of the Christian system are shown in contrast with the corruption and decay of false systems of religion. Special attention is given to the harmony of Science and Religion.

HISTORY, ENGLISH LITERATURE, AND POLITICAL SCIENCE.

Professor Neill.

Prominence is given to historical and economic topics with such knowledge of English Literature as will lay the foundation for a broad culture. While text-books are not altogether discarded, the student is taught, as in Harvard and the University of Michigan, chiefly by lectures, the required preparation and examination of note-books and the writing of theses on assigned topics. During the Senior year particular attention is given to Constitutional History, and the decisions of the United States' Supreme Court since the last amendments to the Constitution.

ENGLISH.

Professors Pearson and Wallace.

The study of Rhetoric continues through the Freshman and Sophomore years. The constant aim is to give facility in writing and speaking, and to encourage students in a critical study of the English classics. In connection with the Art of Discourse essays are required each week. The criticism of essays forms a special feature, with the double view of leading students into the use of good English as well as into habits of careful, intelligent thinking. The first and second terms of the Junior year are then given to Anglo-

Saxon in which selections from the Gospels, Caedmon and Beowulf, are critically read after the same method as that employed in the study of Latin and Greek. Attention is constantly directed to the contributions Anglo-Saxon has made to our own tongue, in words, phrases, idioms, syntax, etc. Following this, one term is devoted to a general view of Early and Middle English, with critical study of selections from Layamon, Ormin and other authors. This prepares for the course in English Literature described elsewhere.

MENTAL SCIENCE AND LOGIC.

Professor Kirkwood.

Study in this department begins with the third term of the Sophomore and continues to the end of the Senior year.

The subjects studied are the Cognitive and Motive Powers, Formal Logic, the Intuitions, the History of Philosophy and Physiological Psychology. In the study of the Cognitive and Motive Powers, due regard is paid to the Physiological element, though the special study of that element and the theories of Wundt, Fechner and others is reserved to a later period in the course.

The aim throughout is to enable the student to acquire skill in observing and analysing his own mental operations and their relations to the physical system, together with a fair understanding of the laws which govern them, and as full knowledge of the doctrine of Intuitions and of the growth and characteristics of the various systems of Philosophy, Ancient and Modern, as the time at command will permit.

DEPARTMENT OF NATURAL SCIENCE.

Professor Forbes.

PHYSICS is studied during the Sophomore year. The instruction is gained from text-books and lectures. The collection of Philosophical apparatus is new and of the most approved kind. It has been carefully selected for the purpose of experimentally illustrating the fundamental principles of Mechanics, Hydrostatics, Hydraulics, Pneumatics, Acoustics, Heat, Light, Magnetism and Electricity. The Physical Laboratory is large and conveniently arranged; and all students, who desire, have opportunity afforded them for laboratory work, thereby enabling them to become familiar with the use and manipulation of the apparatus.

CHEMISTRY is taught in the Junior year. The first term is devoted to the general study of the subject. Special attention is given to the history of the science, the specific properties of the non-metallic and the metallic elements, the subject of chemical affinity, nomenclature, the use of chemical symbols, atomic weight and quantivalence. The collection of chemical apparatus is well adapted for the experimental illustration of the subject, and facilities are afforded the students for laboratory work.

QUALITATIVE CHEMICAL ANALYSIS. The second term of the Junior year is devoted to this subject. Our chemical laboratory is specially arranged for this work, being fitted up with modern appliances. A set of re-agents and all needful utensils are supplied to each table.

The students are required to keep carefully prepared notes of the details of their laboratory work.

In connection with the chemical laboratory there are conveniently arranged dark rooms for work in Photography; and in the main college building there is a sky-light for photographic exposures.

PHYSIOLOGY AND HYGIENE are taught specially with reference to their practical bearing.

In the Preparatory Department, the instruction has particularly in view the deleterious influences resulting from the habitual use of stimulants and narcotics. In the College Department, Physiology is studied from a scientific standpoint, and in this connection the subject of *Sanitary Science* receives particular attention.

BOTANY, ZOOLOGY AND GEOLOGY. In these studies laboratory and field work are pursued as far as practicable. In *Botany* the text-book is used as a guide. Students are expected to make collections of typical plants illustrative of its teachings. They will also be taught to mount and classify plants for the Herbarium. In Zoology a similar course is pursued. The study of specimens in hand and the dissection of typical forms are made a feature of the work. In *Geology* the text-book is supplemented with field work for the collection and classification of minerals, rocks and fossils.

In these branches of study the students are taught the use of the compound microscope and the preparation of objects for the same.

The instruction in the department of science is concluded by a course of lectures on the general subject of *Biology*.

Early in the course the students are taught *Free-hand* and *Perspective Drawing*, and encouraged to make use of this knowledge in their scientific work and investigations.

LATIN LANGUAGE AND LITERATURE.

Professor Pearson.

Throughout the early years of the course, analysis and synthesis, both of words and sentences, are considered indispensable. Special emphasis is put upon the Etymology and Syntax of the language that the student may acquire facility in translating accurately and fluently into idiomatic English. In connection with the poets, Prosody is made prominent. Throughout the course such readings, dissertations and essays are required as will lead students into a careful study of the Literature and History of the Roman people, emphasis being placed upon the manners and customs, political and intellectual development, as well as their relations to other historic nations and times. Reference is had constantly to the studies that are pursued simultaneously that the work may be as nearly unified as possible.

GREEK LANGUAGE AND LITERATURE.

Professor Wallace.

Greek is a cardinal feature of the Ancient Classical Course. The general aim is to study critically some of the masterpieces in each of the great departments of Greek Literature:—History, Oratory, Philosophy and Poetry.

In the first year the Lessons and first book of the *Anabasis* (except chapters 3 and 9), are completed. In the Senior Preparatory and Freshman years, the *Anabasis* and the Dialogues of Lucian (or the Orations of Lysias), with Prose Composition, are carefully studied to give facility in reading plain Attic prose. Special attention is given in these years to the acquisition of a large vocabulary and to the mastery of the grammar.

Three terms are then given to Ionic Greek—Homer and Herodotus—in connection with which the habits, customs, political and religious ideas of the early Greeks are carefully noted. In the study of oratory, besides the attention ordinarily given to Demosthenes, at least one oration of Lysias and one of Isocrates is critically read in the original, or in English, and a general view of the development of Greek oratory is presented. The same plan is pursued in the study of the philosophical writers and the poets.

As most of those who elect Greek have the ministry in view, the Senior year is devoted largely to the Greek Testament, the aim being to read carefully all of St. Paul's Epistles.

To give the student some acquaintance with Greek as now spoken and written, a few recitations are devoted to sight reading in newspapers of current date, published in Athens.

The Hadley-Allen grammar is used for drill, and constant reference is made to Goodwin.

Throughout the course, collateral reading in the histories of Cox, Smith, Grote, Curtius, and other standard authors, is prescribed.

GERMAN LANGUAGE AND LITERATURE.

German is the distinguishing feature of the Modern Classical Course and runs parallel with the Greek of the Ancient Classical. The aim is to master the language both as spoken and written, and to attain a good measure of familiarity with German History and the masterpieces of German Literature. Accordingly, to the careful study of German and the reading of German Classics is added a thorough course in conversational exercises.

In the first year the Grammar and First German Book (Worman) are completed. The next two years are given to the Reader, Grimm's Fairy Tales, Prose Composition, and History of Germany. Then follows the critical study of the classic authors, Lessing, Schiller and Goethe. The course closes with a general survey, by means of text-book and lectures, of the entire field of German Literature.

FRENCH LANGUAGE AND LITERATURE.

French is introduced as an elective in both the Ancient and the Modern Classical courses at the beginning of the Junior year. As students have then made large attainments in Latin, it is believed that much facility in reading and even in speaking the French language may be attained in the time allotted to it. The method of study is the same as that pursued with the German—a combination of the natural or conversational with the scientific.

BIBLICAL HISTORY AND LITERATURE.

Professor Rice.

The Bible has been given a central place in the College Curriculum. It is deemed by the founders of the College the most instructive book to be found in the whole range of literature, in biography, in history, in widely varied passages of unrivaled literary beauty, both in poetry and in prose, in the revelation of a perfect Law and a perfect Gospel, of a perfect Law-Giver and a perfect Saviour, in the culture of a manly character and a noble life. It will be the aim of this department to aid the students in understanding and appreciating the manifold excellences that have secured for the Bible the title of "THE BOOK."

MATHEMATICS.

Professor Boyd.

Preparatory Department :

(A). In the Junior Preparatory, there are four exercises a week during the year in Arithmetic.

(B). The Middle Preparatory, taking up Wells' University Algebra, have five exercises a week throughout the year, completing Radicals.

(C). Beginning with Quadratic Equations, the Senior Preparatory Class recites four times a week during the first term, completing to Theory of Equations. During the second and third term the class recites four times each week in Wentworth's Revised Geometry, completing the first six books.

The Collegiate Department :

(A). During the first term in the Freshman year, the class have five exercises a week, completing Plane and Solid Geometry. Accompanying the text-book work many exercises in Mensuration are required of the class. Algebra is completed in the second term. The class recites five times a week. The text-book work is supplemented with lectures on the Theory of Numbers. During the third term there are four exercises a week in Plane Trigonometry.

(B). In the Sophomore year during the first term there are four exercises a week in Spherical Trigonometry. The second term is occupied by the study of Analytical Geometry, the class reciting four times a week. During the third term the studies are Surveying and Navigation, which together recite three times a week. Field work in Surveying is required of the class.

(C). During the Junior Year five lessons a week are given to Analytical Geometry and the Calculus. Mathematics is elective and the studies for the first and second terms are Analytical Geometry and Differential Calculus; for the third term Integral Calculus. Newcomb's Analytical Geometry and Bowser's Calculus are used.

(D). The elective in Junior Year runs through the first and second term of Senior Year, reciting four times a week. For the first term the elective study is Mechanics; for the second the Mechanical theory of Light, Heat and Magnetism.

YOUNG'S GENERAL ASTRONOMY

Is a required study during the second and third terms. The subject occupies three hours a week in the second and four hours in the third.

In this department an effort is made to avoid *routine* work as much as possible by giving original exercises to which the student is to apply the principles he has already learned.

OPTIONAL COURSE.

An optional course of one or two hours a week during the next year will be given, a plan only partially accomplished this year. The object of this optional is to broaden the students' ideas of the mathematical world by giving a general and complete discussion of the Theory of Numbers, and by introducing as many as possible of the modern ideas recently discovered.

In the Theory of Numbers the right of the positive Integer, negative Integer, Fraction, Irrational and Complex Numbers ($a+ib$) to constitute the family of numbers is established, and the Fundamental laws governing the Fundamental operations ordinarily performed on these numbers are developed. Also the general proof that *every Algebraic Equation has a root*, a theorem the truth of which is assumed in all common algebras.

GENERAL INFORMATION.

LOCATION.

Macalester College is located midway between the business centers of the cities of Minneapolis and St. Paul, and within one and a half miles of Merriam Park. The Chicago, Milwaukee and St. Paul Railway passes within three-quarters of a mile of the College building. The location is beautiful and commanding. Minneapolis is in full view from the College grounds, and a short walk to the east of the College grounds brings St. Paul into view. On the east of the College is Snelling avenue, on the north is Summit avenue, or the completed *boulevard*, two hundred feet in width from Minneapolis to St. Paul. Being about five miles from the business centers of the Twin Cities, it is, by the cars, a ten minutes ride to either. There are no saloons or other temptations to immoral habits present. All of the advantages of the city are had, without any of the disadvantages. The healthfulness of the climate is unsurpassed.

ACCESS.

Access to it is had by means of the Chicago, Milwaukee and St. Paul Railway. The trains stop at Macalester Station, the point where Snelling avenue intersects the railroad.

Special rates of travel are furnished students from either city. These allow students to board at home and easily avail themselves of superior advantages for a thorough collegiate education.

CHARACTER.

The character of the College is religious, under Presbyterian control. It aims at *Higher Christian Education*, theoretical and practical. The cardinal doctrines of the Christian religion will be firmly maintained, but denominational preferences will not be interfered with. We accept the trust of young men committed to our care, and will carefully guide them in paths of literature, science and religion, and guard them against any habit not in keeping with the highest standard of manly character and moral excellence; and, with Divine help, we will seek to realize our aim in thoroughly educated Christian young men.

HOME.

Students will find a home in the Dormitory, and social advantages in the families of the Faculty.

The Dormitory contains twenty double rooms, each designed to accom-

modate two students. They are heated with steam, and are furnished with ample and substantial furniture.

The general management of the Dormitory belongs to the Board of Trustees, and its government and discipline belong to the Faculty. The boarding is under the direction of the Matron who, with suitable help provides good boarding at rates as near to actual cost as can be ascertained.

GOVERNMENT.

Students are expected to deport themselves as gentlemen, and conform to the prescribed rules of government. Diligence in the hours designated for study is required. Abundant facilities for wholesome exercise and recreation are given. No student is permitted to waste his time and money in habits of indolence and prodigality.

Students in the Collegiate Department are permitted to visit either city on the holiday of each week. Visitations of the cities at night and going to or returning from the cities on the Lord's Day must be by permission of the Faculty.

Students in the Preparatory Department are required to obtain permission from the Faculty before leaving Macalester for Merriam Park, or either of the cities.

SPECIAL REGULATION. The use of tobacco is discouraged, and is prohibited in and about the College buildings.

RELIGIOUS SERVICES.

Devotional services begin the college work of each day, at which all the students are required to be present.

Public worship is held every Sabbath morning in the College Chapel, followed by a Bible lesson in classes, attendance upon which is required of all students except those boarding at home, and those excused by written request of parents or guardians to worship elsewhere.

There is an active and flourishing branch of the College Y. M. C. A. which has proved to be an agency of great spiritual power among the students. Its meetings are held every Sabbath evening, and the College prayer meeting is held every Wednesday evening, to both of which all are invited.

LITERARY SOCIETIES.

Three Literary Societies are in successful operation. These are the *Hyperion*, the *Academian* and the *Parthenon*. The *Hyperion* is for the College classes whose students are required to unite with it for improvement in literary exercises. The other societies are for Preparatory students, and it is expected that they will become connected with them, and faithfully improve the advantages they afford.

LIBRARY.

During the past year about 900 volumes in art, science and literature were added to the library, making the aggregate number of volumes about 5,000. Valuable additions will be made to these as rapidly as possible.

For the increase of the library, contributions in books and money are solicited. "Each person giving five hundred or more books shall have his name attached to one of the alcoves."

Mr. James J. Hill, of St. Paul, has, during the last year, given five thousand dollars for a Reference Library, on condition that a fire-proof building within three years is erected, and that the library under proper regulations is open to all investigators.

READING ROOM.

To provide increased facilities for the growing demands of the College, the Board of Trustees has erected the main building of the College, in which provision is made for ten large class-rooms, and additional rooms for a museum and for literary societies. The basement of this building is equipped for a gymnasium, where sufficient opportunities are given for needed exercise, under a competent instructor. The west wing as exhibited in the cut is yet to be erected.

MAIN BUILDING AND GYMNASIUM.

During the year a commodious Reading Room has been fitted up and liberally supplied with good reading matter. The following papers and magazines are on file: Pioneer Press, Globe, Minneapolis Tribune, Harpers' Weekly, Public Opinion, Journal of Education, Literary News, New York Independent, Scientific American, Northwestern Presbyterian, Interior, Herald and Presbyter, Presbyterian, Presbyterian Journal, Evangelist, Presbyterian Banner, Congregationalist, North American, Forum, Scribner's, Harpers' Monthly, Popular Science Monthly, Atlantic Monthly, Andover Review, Presbyterian Review, Missionary Review, New Englander, Christian Thought, Eclectic, O. T. Student, Education, Our Day, Political Science Quarterly, Nineteenth Century, Contemporary Review.

Besides liberal contributions made by the professors and by friends living in the vicinity of the College, a considerable sum was realized from the following course of lectures;

Dr. Peter Stryker, "The Orient;" Miss Augusta Chapman, Elocutionary Recital; Dr. S. M. Campbell, "Faith and Reason;" Dr. James Wallace, "Greece;" Rev. J. M. Patterson, "Life Thoughts for Young Men;" Prof. D. L. Kiehle, "The Educational Basis of Our Civilization;" Dr. D. S. Gregory, "The Mission of American Young Men;" Dr. T. D. Simonton, "Travels in Europe;" Dr. A. W. Ringland, "Vapor and Vaporers;" Dr. T. A. McCurdy, "Presbyterianism and the Republic."

TEXT-BOOKS.

Arrangements are made whereby text-books and stationery are furnished to students at reasonable rates.

EXAMINATION.

Written examinations are held at the close of each term, and the class standing of each student is fixed according to his grades in the branches studied. A record is kept of each student's grades in scholarship and deportment, a copy of which is sent to his parents or guardian.

DEGREES.

Graduates from either of the Collegiate Courses receive the degree of A. B.

EXPENSES.

Boarding in the Dormitory is *three dollars per week*.

Rooms in the Dormitory are furnished with bedsteads, wire beds, mattresses, pillows, bureau, washstand, table, chairs, bookcase, heat and light, *at fifty cents per week* per student. Washing in the laundry, fifty cents per dozen pieces. A Laboratory fee of *five dollars* is charged to students for materials used by them in Laboratory work.

BEDCLOTHING.—Students entering the Dormitory will provide themselves with all articles of bedclothing except pillows and bolsters.

Boarding in private families from four to four and one-half dollars per week.

RATES OF TUITION.—All candidates for the ministry have tuition provided for them, according to the action of the Board of Trustees, which requires:

(A). That candidates for the ministry shall be under the care of Presbyteries, or shall have their purpose to enter the ministry certified to by their pastors and Church Sessions.

(B). That such students shall execute and give to the Treasurer of the Board of Trustees an obligation to refund the amount of tuition received in the event of their abandoning their purpose to enter the ministry.

(C). That free tuition shall not be provided for any candidate for the ministry who indulges in the use of tobacco.

Tuition in the Preparatory Department	\$ 10 per term.
Incidental fee " "	3 " "
Tuition in the Collegiate " "	15 " "
Incidental fee " "	3 " "
Graduating fee " "	10 " "

SUMMARY OF EXPENSES.

First term, 14 weeks, Preparatory Dept., washing estimated at \$7,	Term.	\$69
Second term, 12 " " " " " " " " " "	6,	61
Third term, 10 " " " " " " " " " "	5,	53

For the Preparatory year..... \$183

First term, 14 weeks, Collegiate Dept., washing estimated at \$7,	Term.	\$74
Second term, 12 " " " " " " " " " "	6,	66
Third term, 10, " " " " " " " " " "	5,	58

For Collegiate year..... \$198

Tuition and incidental fees must be paid in advance or arranged for with the Treasurer, before students are admitted to their classes. Board and washing to be paid weekly. No extra charges, except for chemicals and breakage of working material in the Laboratory, for damage done to the furniture or to the building, for tutoring in preparation for regular class standing, and for special services in case of sickness.

TO PARENTS.

Parents are earnestly requested (1) to note the rule of the Board requiring the payment of tuition in advance; (2) to examine carefully the reports of students sent out at close of each term; (3) to co-operate heartily with the Faculty in enforcing the regulation in regard to visiting the cities.

CALENDAR.

1889.—September 10, Tuesday, Entrance Examinations.

September 11, Wednesday, Fall Term begins.

December 18, Wednesday, Fall Term ends.

Two weeks of vacation.

1890.—January 2, Thursday, Winter Term begins.

March 26, Wednesday, Winter Term ends.

One Week of Vacation.

April 2, Wednesday, Spring Term begins.

June 8, Sabbath, 3 P. M., Baccalaureate Sermon.

June 8, Sabbath, 8 P. M., Sermon to the College Y. M. C. A.

June 9, Monday, 10 A. M., Field Day.

June 9, Monday, 8 P. M., Senior Address.

June 10, Tuesday, 2:30 P. M., Class Day.

June 10, Tuesday, 8 P. M., Hyperion Literary Entertainment.

June 11, Wednesday, 9:30 A. M., Annual Commencement.

Thirteen Weeks of Vacation.

SCHOLARSHIPS.

Mrs. Sarah E. Oliver, Minneapolis, Minn.....\$5,000.

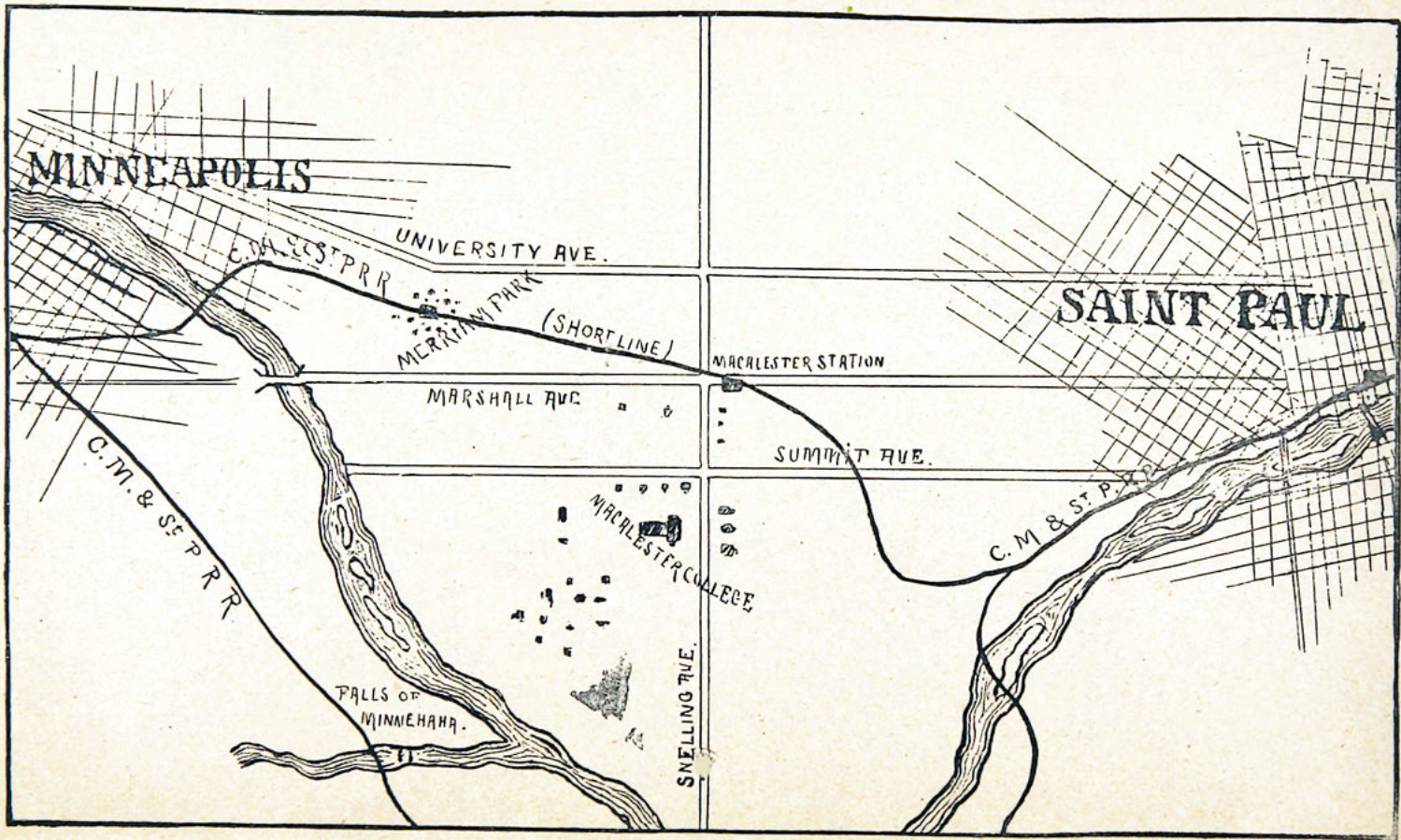
Geo. D. Dayton, Esq., Worthington, Minn..... 1,000.

P. E. Crissey, Esq., St. Paul, Minn..... 1,000.

Scholarships are solicited in amounts ranging from one to five thousand dollars to be invested as Permanent Funds whose proceeds shall be used, if necessary, in providing free tuition to young men having the ministry in view.

For Catalogue and other information, address the President at Macalester College, St. Paul, Minnesota.

Bequests to the College should be made to "The Trustees of Macalester College,"—the corporate name of the College.



MINNEAPOLIS

SAINT PAUL

C.M. & ST. P. R.R.

UNIVERSITY AVE.

MERRIMAN PARK (SHORTLINE)

MACALESTER STATION

MARSHALL AVE.

SUMMIT AVE.

C.M. & ST. P. R.R.

C.M. & ST. P. R.R.

MACALESTER COLLEGE

FALLS OF MINNEHABA.

SNELLING AVE.

